

LG-T1921RGBA-TD-AL

DATA SHEET

SPEC. NO. : SZ22101501
DATE : 2022/10/15
REV. : A/0

Approved By:

Checked By:

Prepared By:



LG-T1921RGBA-TD-AL

TOP Full-color LED

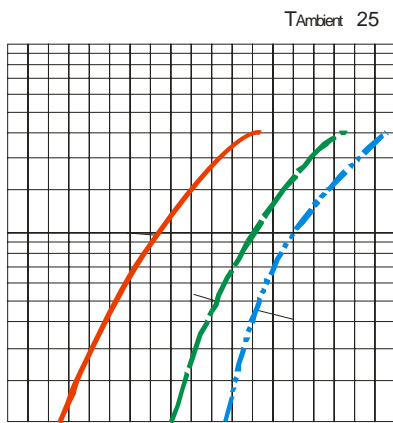
+ 0 - D

Catalogue

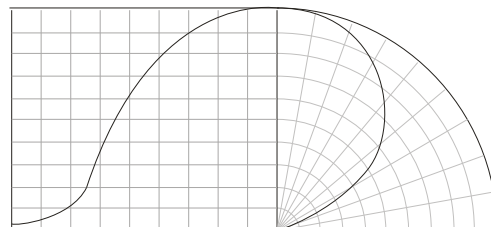
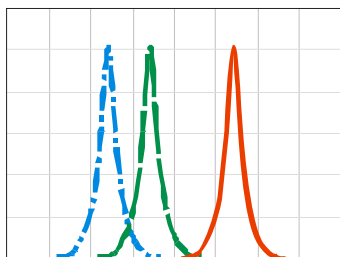
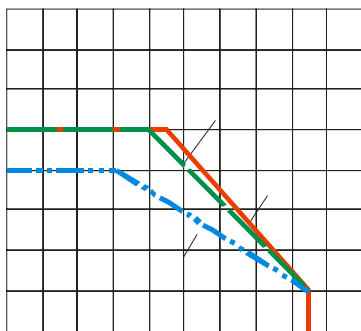
Electrical Characteristics.....3

Typical Characterist7(0)8 4-1(st7(0)8 TD[st7(0)8 TD782 77.281.19 -7rve0.449 -6.02TJ 0.0013 Tc 10.2.73T1 1 1r 4
31.076 TD[29.36(T)1-5(1 Ch)8(aracteriReliability)17cte906 642 7 Items and Conditions.168 29.36 TD[...]TJ 0.0013 T

Typical Characteristics Curves



T_{Ambient} 25



Reliability Test Items And Conditions

实验项目	参考标准	实验条件	时间	样品数	判据
		↔			

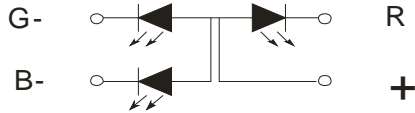
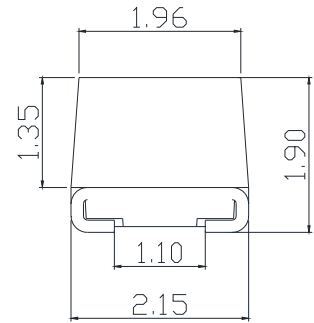
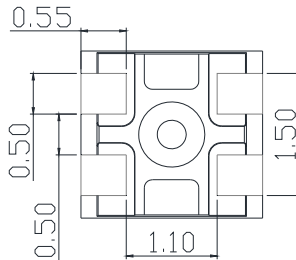
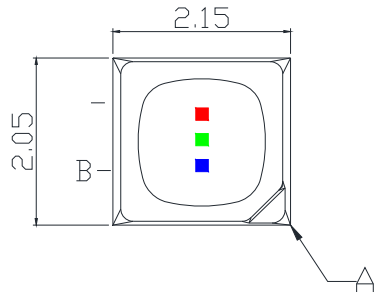
Criteria For Judging Damage

测试项目	符号	测试条件	判定标准
			μ
			≧ ≦

Product design and operational recommendation

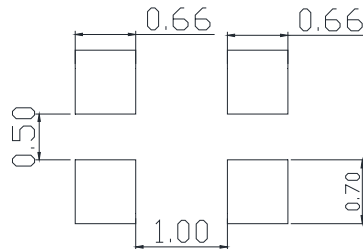
1 mm

Product design Unit: mm



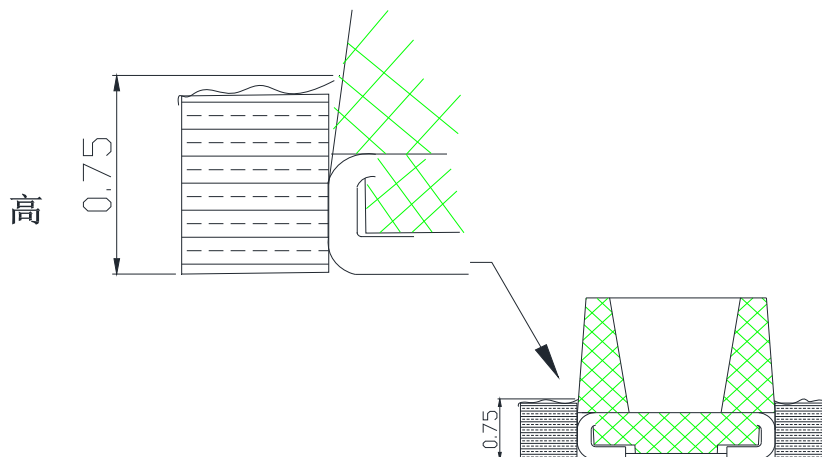
2 mm

Recommended soldering pad (Unit: mm)



3 0.75mm

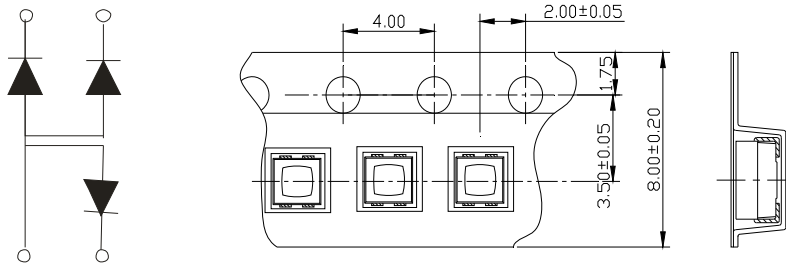
Recommendation for glue filling: filling height must be higher than or equal to 0.75mm



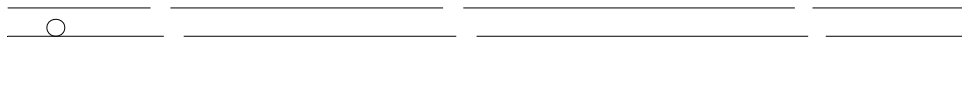
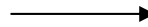
1

Packaging (1)

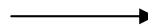
◇ Carrier Tape



◇ Details Of Carrier Tape

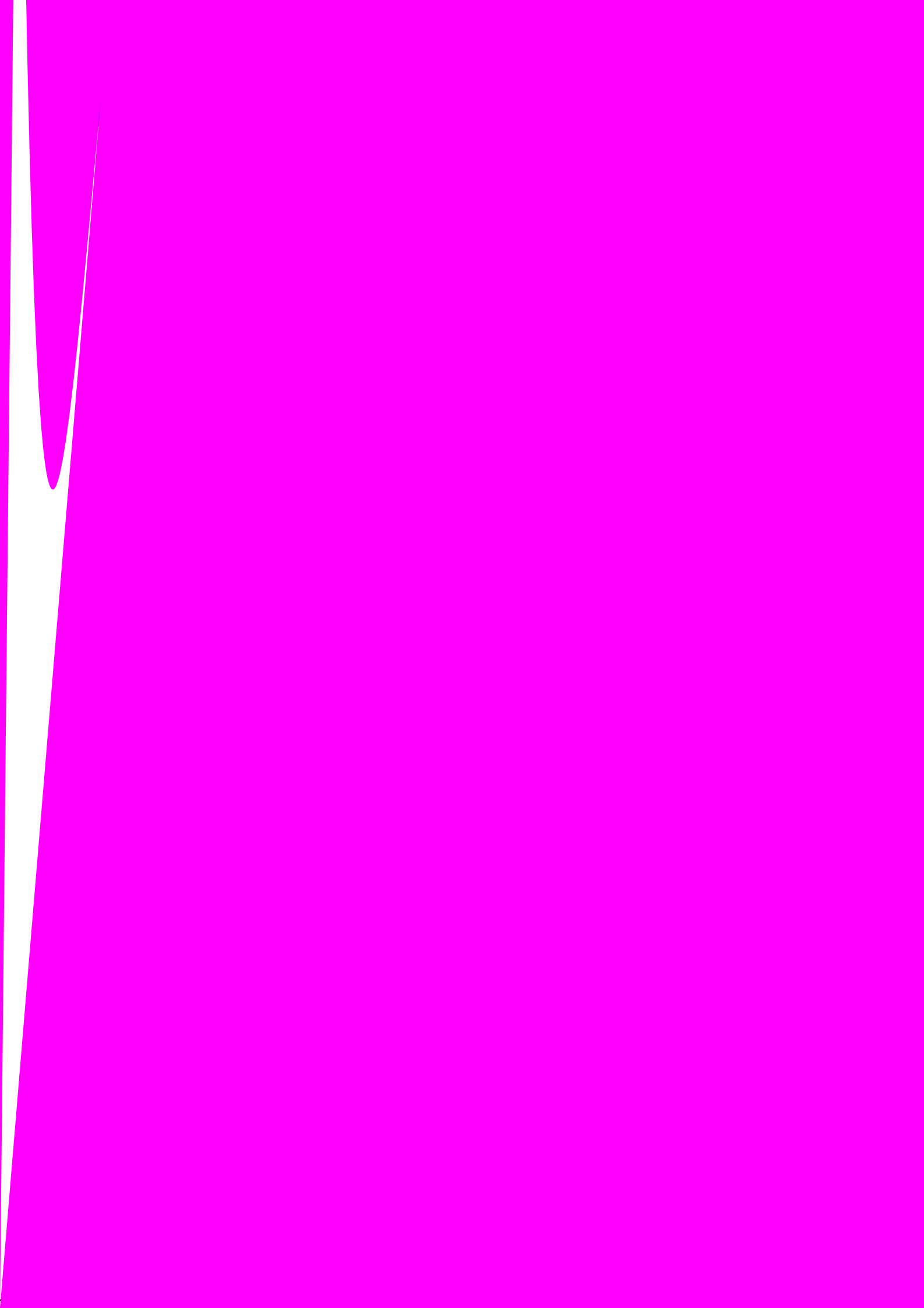


◇ Reel Dimension



LIGHT

LIGHT ELECTRONICS CO., LTD.





2

Guideline for Soldering (2)

LIG

(2)

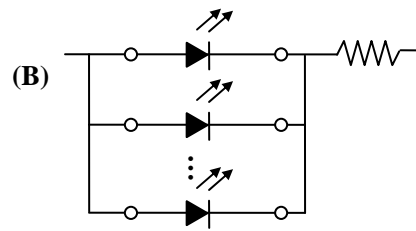
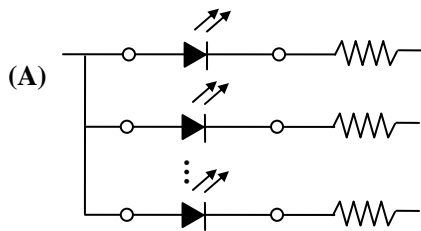
Precautions (2)

3.

Design Consideration

-

-



-

4.

Reverse voltage protection

-

