

## LG-T2727RGBA-TD-A

SPEC.NO. : SZ19081205  
DATE : 2020/05/07  
REV. : A/1

Approved By:

Checked By:

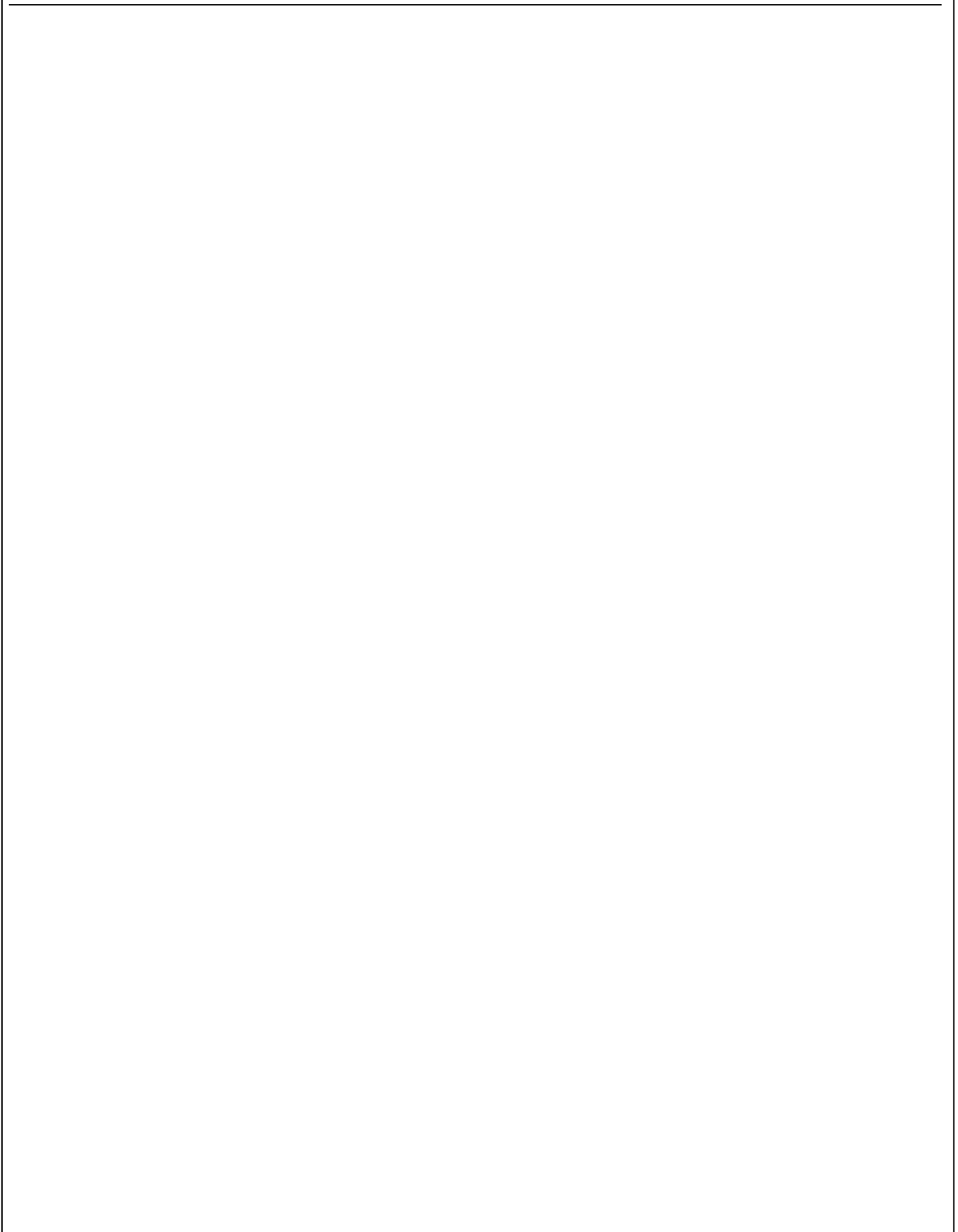
Prepared By:

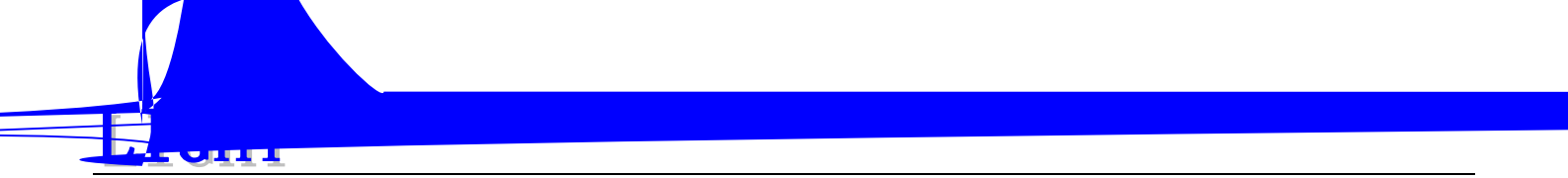
**LIGHT**



**LG-T2727RGBA-TD-A**

**TOP Full-color LED**

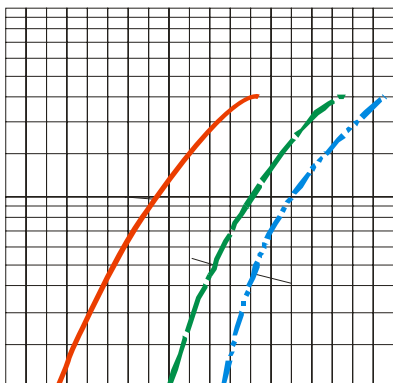




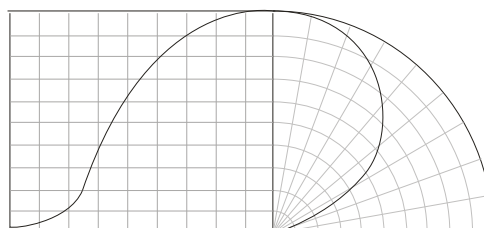
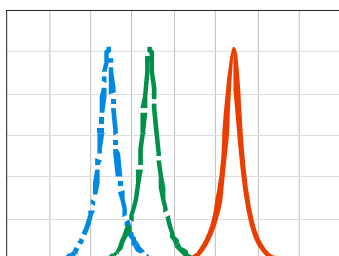
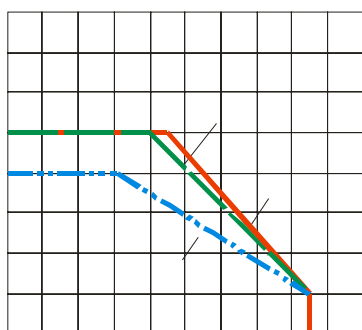
L'OFFICINA

## Typical Characteristics Curves

T<sub>Ambient</sub> 25



T<sub>Ambient</sub> 25



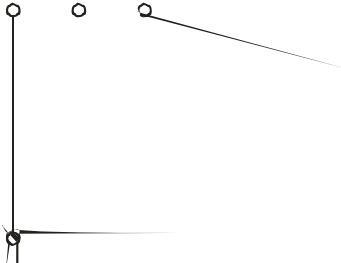




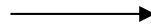
## 1

### Packaging (1)

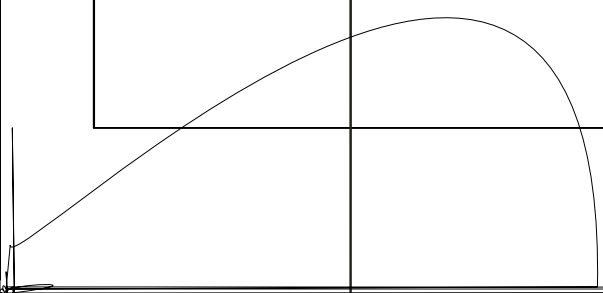
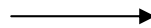
◇ Carrier Tape



◇ Details Of Carrier Tape



◇ Reel Dimension

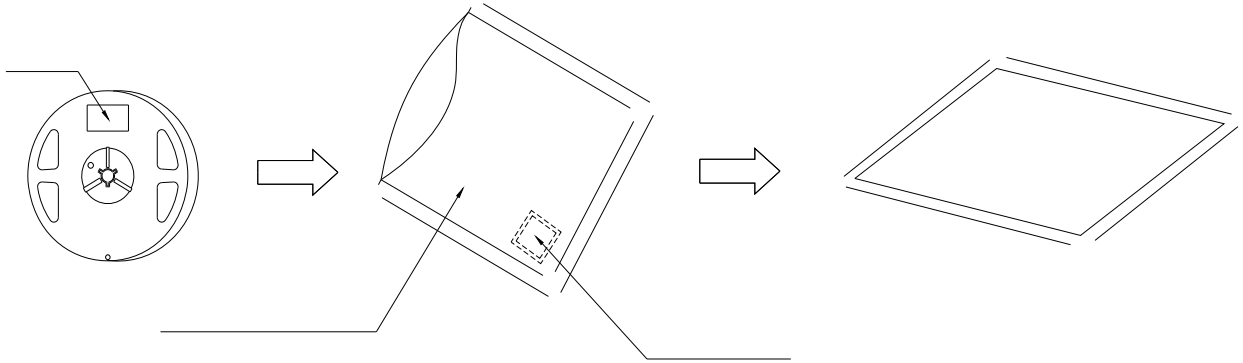


## 2

### Packaging( 2)



#### Moisture Proof and Anti-Electrostatic Foil Bag



#### Cardboard Box



#### Label Explanation

## 1

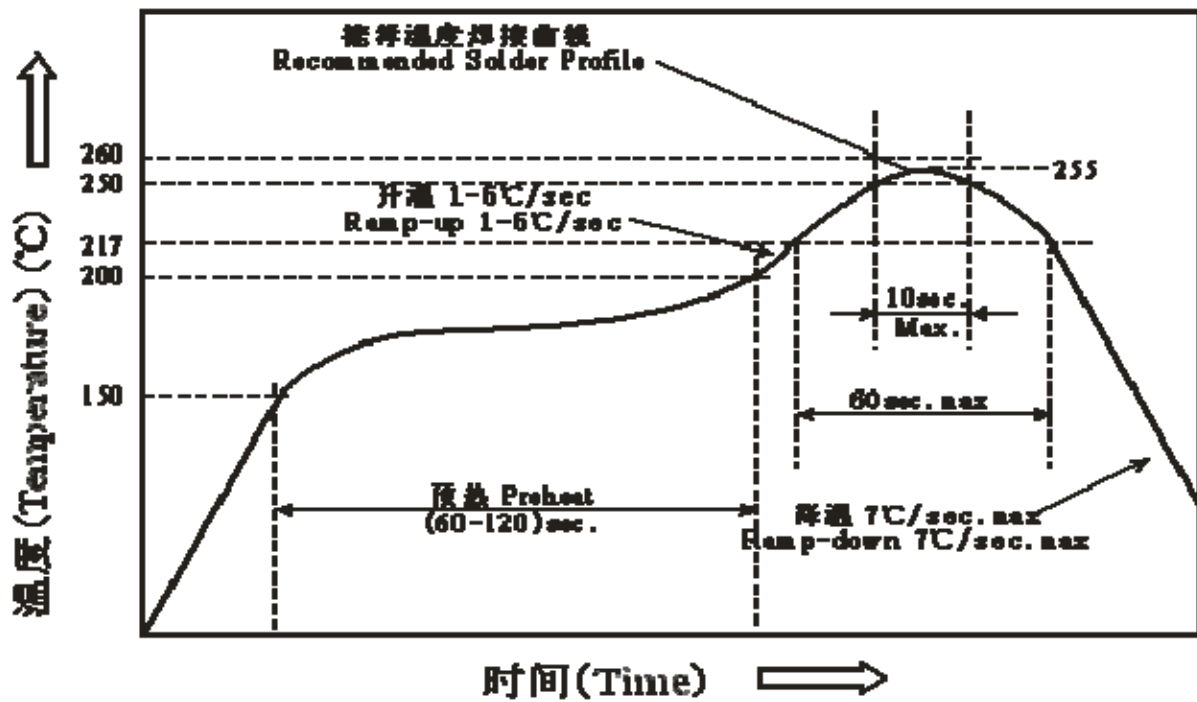
### Guideline for Soldering (1)

1.

#### Hand Soldering

- 
- 
- 
- 

#### Reflow Soldering:



## 2

### Guideline for Soldering (2)

## (1)

### Precautions (1)

1.

#### Storage

- 
- 
- 
- 
- 

2.

#### Static Electricity

- 
- 
-

(2)

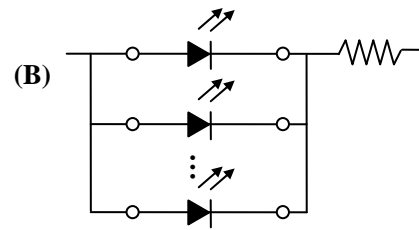
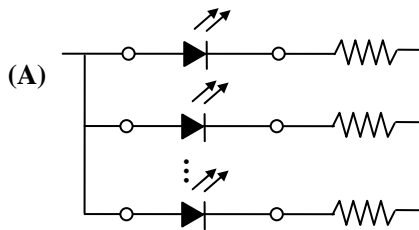
## Precautions (2)

3.

### Design Consideration

•

•



•

4.

### Reverse voltage protection

•

•

(3)

## Precautions (3)

5.

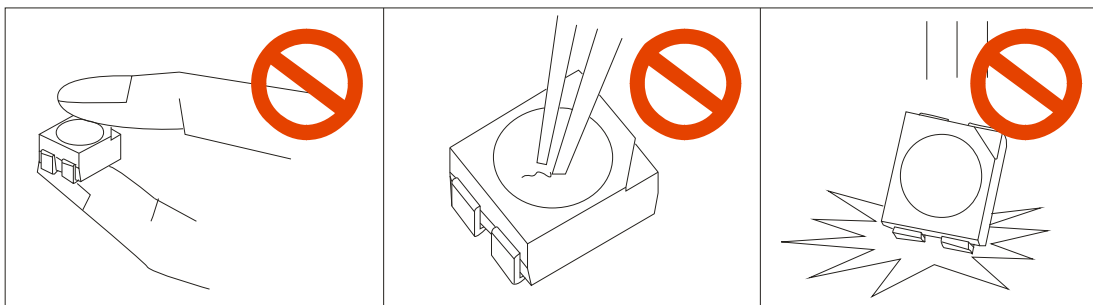
The safe temperature for LEDs working

- 

6.

Others

- 



-