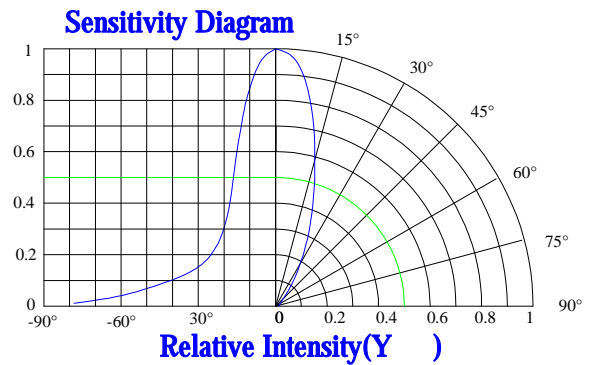
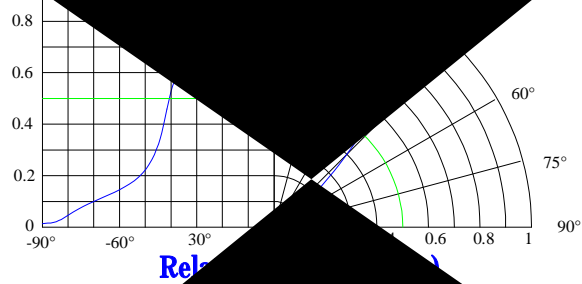
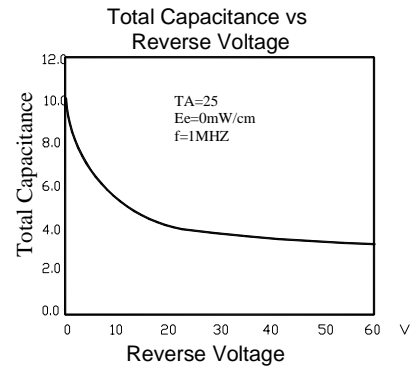
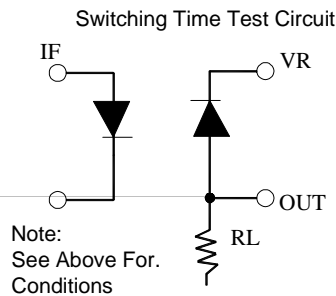
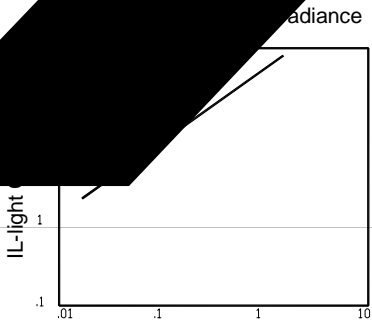
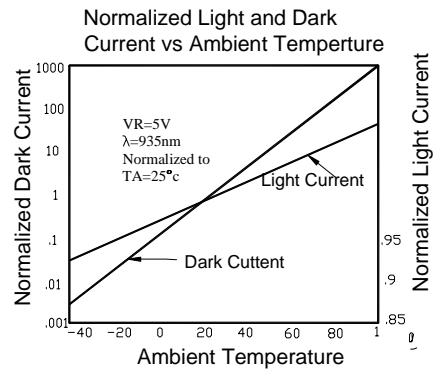
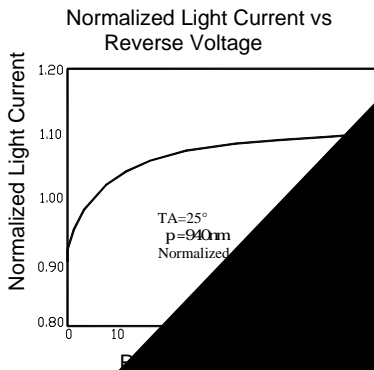
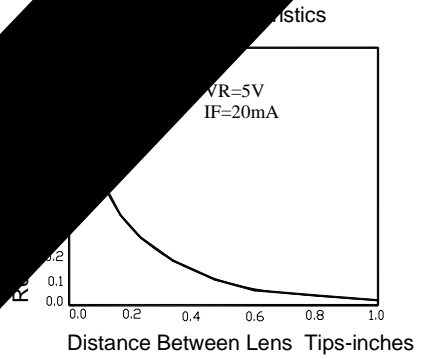
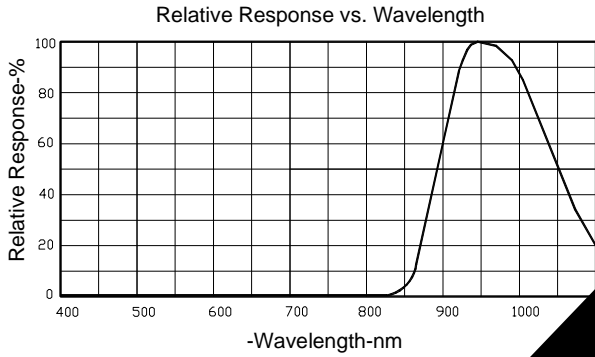


Typical Electrical / Optical Characteristics Curves (25 Ambient Temperature Unless Otherwise Noted)



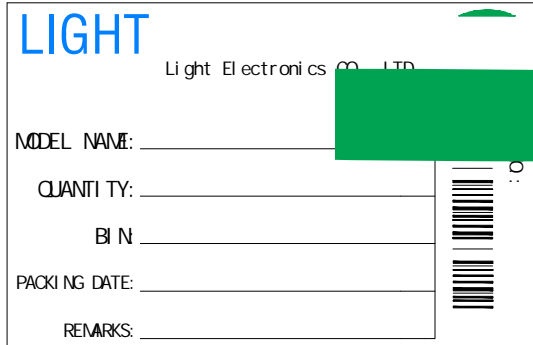


Infrared Photo Diode Specification

●Commodity: Infr6 -9.5501.8 -10. 16.42m6 ii(o)-2882.0(l)-2.0(n0(:)-282.0(l)e 0 0 1 36.84 709.16 Tm

Label Explanation

LIGHT Universal Label



The diagram shows a rectangular label with the following fields and features:

- Top left: "LIGHT" logo in blue.
- Top right: A green semi-circular sticker.
- Below logo: "Light Electronics CO., LTD." with a green rectangular redaction box covering the company name.
- Fields: "MODEL NAME:", "QUANTITY:", "BIN", "PACKING DATE:", and "REMARKS:" each followed by a horizontal line.
- Right side: A vertical barcode with the number "10" to its right.

Customer Defined Label



Carrier Tape Specifications (Loaded Quantity: 2300pcs/reel)

ITEM	W	A0	A1	B0	B1	K0	E	F	D0	D1	P0	P1	P2	T
DI M	12.00	4.35	2.05	4.40	4.10	3.65	1.75	5.50	1.50	1.60	4.00	8.00	2.00	0.30
TOL	+0.10 -0.10	+0.10 -0.10	+0.10 -0.10	+0.10 -0.10	+0.10 -0.10	+0.10 -0.10	+0.10 -0.10	+0.10 -0.10	+0.10 -0.10	+0.10 -0.10	+0.10 -0.10	+0.10 -0.10	+0.10 -0.10	+0.05 -0.05

